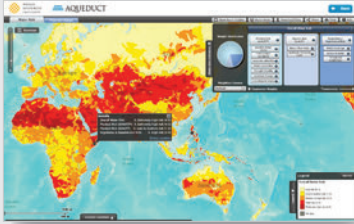




INTELLIGENT WEB TECHNOLOGIES
and MAPPING SOLUTIONS



WRI Aqueduct



Global Forest Watch Fires



IUCN Red List Mapper



WRI Development Alert!

Blue Raster develops award winning, interactive web mapping applications for clients globally.

We specialize in ESRI ArcGIS Server Rich Internet Mapping Applications. A key focus includes building visualization tools to facilitate transparency through open data.

SERVICES

Cloud GIS | Open Data | Web Maps | Mobile Strategy | Interactive Mapping Tools

SKILLS

Rich Internet Applications

ArcGIS Online, HTML5, JavaScript, Adobe ColdFusion

Mapping/GIS Development

ArcGIS Server/Desktop, Cartography, Geoprocessing (Python, ArcObjects), Data Collection/Compilation, Map Production, Installation/Support

Mobile Development

iOS, Android, PhoneGap, HTML5

Blue Raster LLC
2200 Wilson Boulevard
Suite 210
Arlington, VA 22201

703-875-0911 PHONE

info@blueraster.com
www.blueraster.com

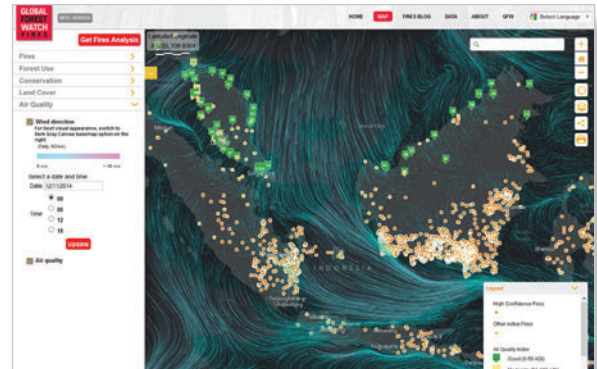
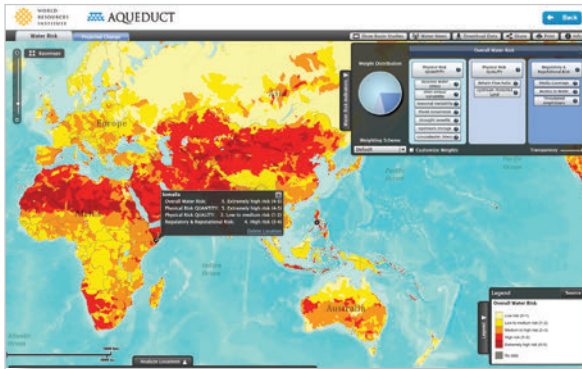
@blueraster

facebook.com/blueraster



BLUERASTER

INTELLIGENT WEB TECHNOLOGIES and MAPPING SOLUTIONS

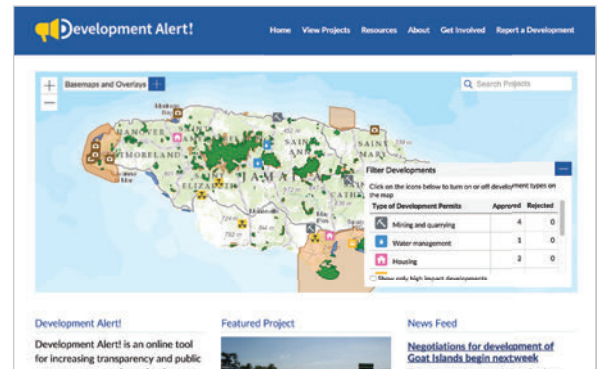
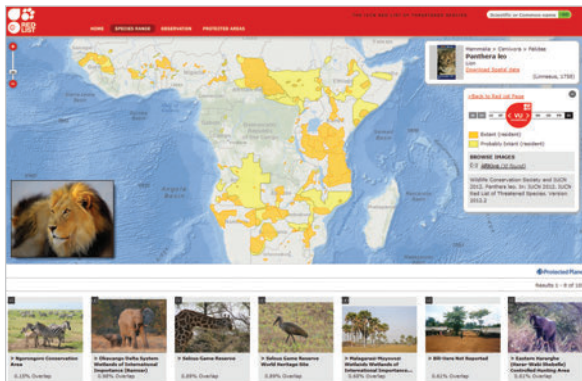


WRI – Aqueduct Water Risk Atlas aqueduct.wri.org/atlas

The World Resources Institute’s Aqueduct is assisting companies and investors around the world manage exposure to geographic water risks. This ArcGIS Server mapping application enables users to quantify and map water risks on a local scale and project future water use and availability. Aqueduct has received extensive media coverage including in the New York Times and The Guardian.

Global Forest Watch Fires fires.globalforestwatch.org

Each year, forest and land fires rage across Indonesia producing a toxic haze. To address this risk, World Resources Institute (WRI) partnered with Blue Raster, Esri, DigitalGlobe, and others to launch GFW Fires. The platform combines fire alerts with high resolution satellite imagery, wind direction, and a daily feed of air quality data. This provides the visual evidence needed for governments to hold accountable those who may have burned forest illegally, and to determine who will be effected downwind.



IUCN Red List Mapper maps.iucnredlist.org

The IUCN Red List Mapper combines two significant global biodiversity datasets – IUCN’s Red List of Threatened Species and the World Database on Protected Areas. Now conservationists, scientists, policy makers and concerned citizens can instantly see the geographic range of a threatened species overlaid with protected areas. This application was featured at the 2012 Esri International User Conference Plenary Keynote.

WRI Development Alert! developmentalert.org

Launched from the World Resources Institute’s Access Initiative, Development Alert! provides access to information about development projects affecting the environment and public health. Utilizing ArcGIS for Server, the site displays recently approved or proposed projects along with information on public hearings, giving citizens and communities the opportunity to influence key decision-making. Optimized for use on desktops and mobile phones, it is possible for anyone to get involved.