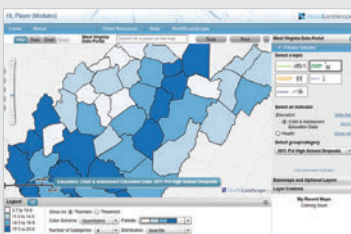
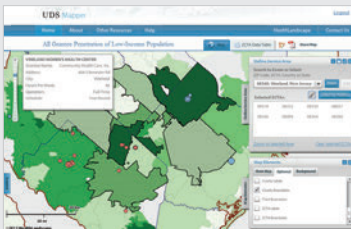
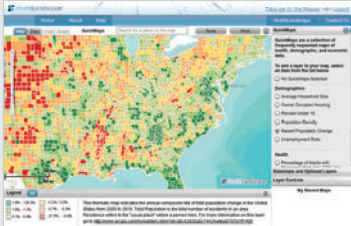




INTELLIGENT WEB TECHNOLOGIES
and MAPPING SOLUTIONS



Blue Raster develops award winning, interactive web mapping applications to improve health and healthcare effectiveness.

Blue Raster specializes in building ArcGIS Server Rich Internet Applications, enabling state and local decision-makers and healthcare organizations to quickly and easily visualize volumes of information that communicate critical health information and trends.

SERVICES

Cloud GIS | Open Data | Web Maps | Mobile Strategy | Interactive Mapping Tools

SKILLS

Rich Internet Applications

ArcGIS Online, HTML5, JavaScript, Adobe ColdFusion, Flex, Flash

Mapping/GIS Development

ArcGIS Server/Desktop, Cartography, Geoprocessing (Python, ArcObjects), Data Collection/Compilation, Map Production, Installation/Support

Mobile Development

iOS, Android, PhoneGap, HTML5

Blue Raster LLC
2200 Wilson Boulevard
Suite 210
Arlington, VA 22201

703-875-0911 PHONE

info@blueraster.com
www.blueraster.com

@blueraster

facebook.com/blueraster

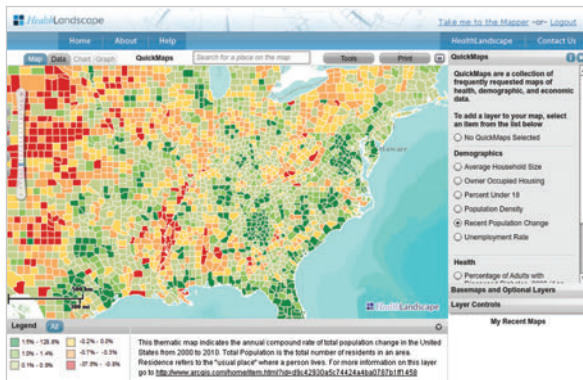


Esri Partner Conference
2012 Award Winner
Public Web Application



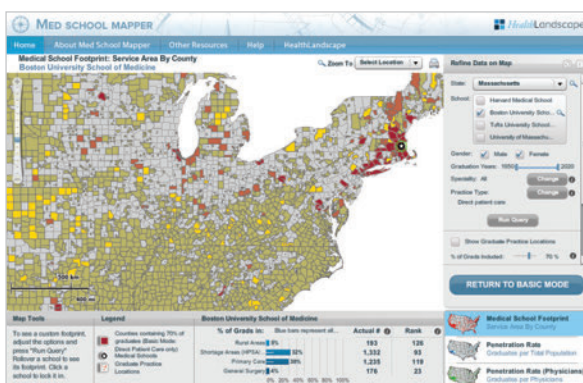
Schedule
Contract GS-35F-0385P





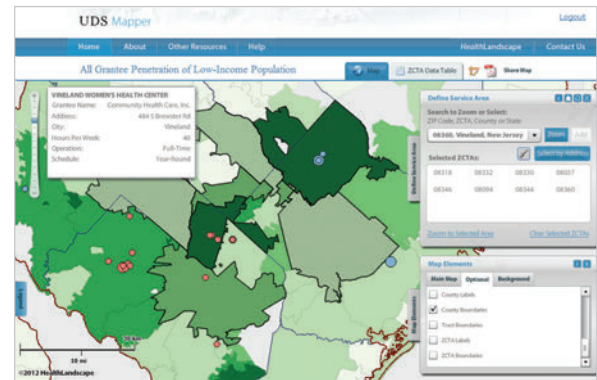
HealthLandscape healthlandscape.org

HealthLandscape is an interactive web-based mapping tool for healthcare professionals to combine, analyze, and display health information in ways that promote understanding, improve outcomes, and reduce the cost of healthcare. Blue Raster developed HealthLandscape in partnership with the Health Foundation of Greater Cincinnati, AAFP, and the Robert Graham Center. The latest version allows HealthLandscape's anthology of health-related tools to be combined, enabling the use of an all-in-one mapping viewer. It is also easier for healthcare professionals and advocates to combine their own data with existing health maps and public sources of health, socio-economic and environmental information.



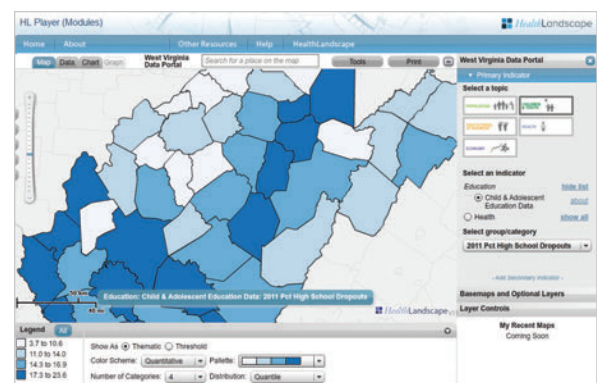
Med School Mapper medschoolmapper.org

Med School Mapper gives planners essential information for directing and evaluating medical school expansion and its impact on access and other social aims. Med School Mapper allows state policymakers to visualize the local and regional impact of medical schools, enabling them to direct expansion funding to training sites based upon their regional social and health care access needs. Blue Raster created the application, which is a result of the Macy Foundation-funded Medical Education Futures Study directed by the Robert Graham Center.



UDS Mapper udsmapper.org

Blue Raster contributed to the development of UDS Mapper for HRSA (Health Resources and Services Administration), part of the U.S. Department of Health and Human Services. Created using Esri ArcGIS Server and deployed on the Amazon Cloud (EC2), this mapping application provides current data on the geographic reach and growth of federally (Section 330)-funded health centers. HRSA staff and policy makers use this interactive tool to identify populations who remain unserved by these health centers and to inform decisions regarding grants. UDS Mapper took first place in the Web-Based GIS Application category at the 2011 Esri International User Conference's User Software Applications Fair.



Community Indicators Data Portal healthlandscape.org/community-data-portals.cfm

The HealthLandscape Community Indicators Data Portal makes data accessible and interactive, resulting in improved data-driven decision making. It enables the public and stakeholders to see and analyze trends, indicators, and statistics they find important. The data is graphically displayed, making it easy to see and discuss, which draws people to the website and establishes it as a central data repository. The Community Indicators Data Portal was recognized at the 2012 Health Initiatives Forum (Datapalooza), where it won second place in the Community Applications Fair.